



**Crevavi**

*Create, Embed, Empower*

# **Product Overview**

## **BLE Tag**

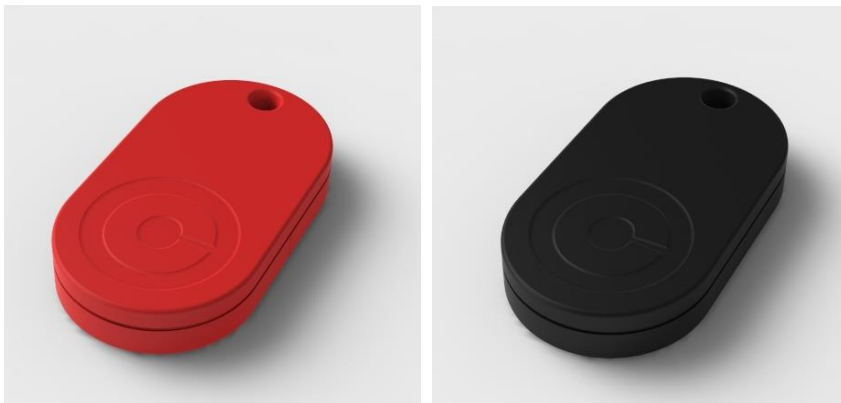
31 December 2015

# Overview

- A set of small, light weight tags, with key chain attachable option
- Tags are connected to smart-phone using Bluetooth Low Energy (BLE)
- A mobile (smart-phone) application can connect to the tags using BLE
- Tags run on a single 3V coin cell for 4-6 months
- Up-to 6 tags can connect to mobile app simultaneously
- When one or more tags move away from mobile and gets disconnected (typically 30-50 ft. proximity), then tags and mobile issue audible alarm
- When tags move back within proximity, it re-connects
- Mobile can command each tag to raise audible alarm to help user locate it
- Mobile app shows the signal strength of each connected tag, helping user to locate it
  
- Future feature
  - Mobile app records each tag's last connected location every time it disconnects

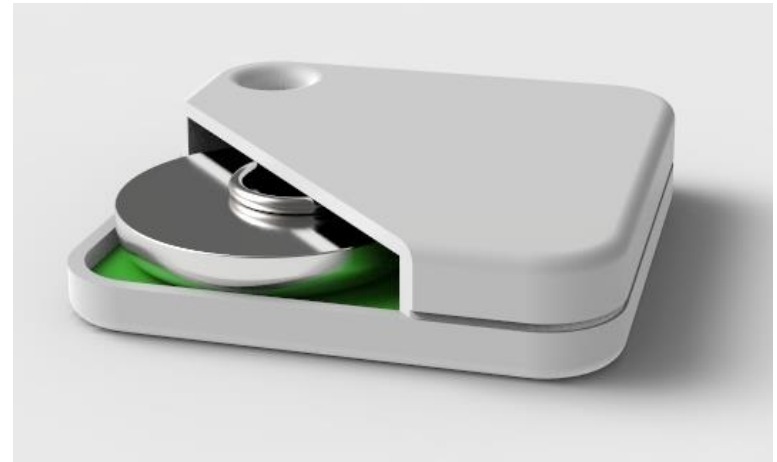
# Concept-1

- Dimension: 43 x 24 x 7mm
- Built in Buzzer



# Concept-2

- Dimension: 34 x 34 x 7mm
- Built-in Buzzer

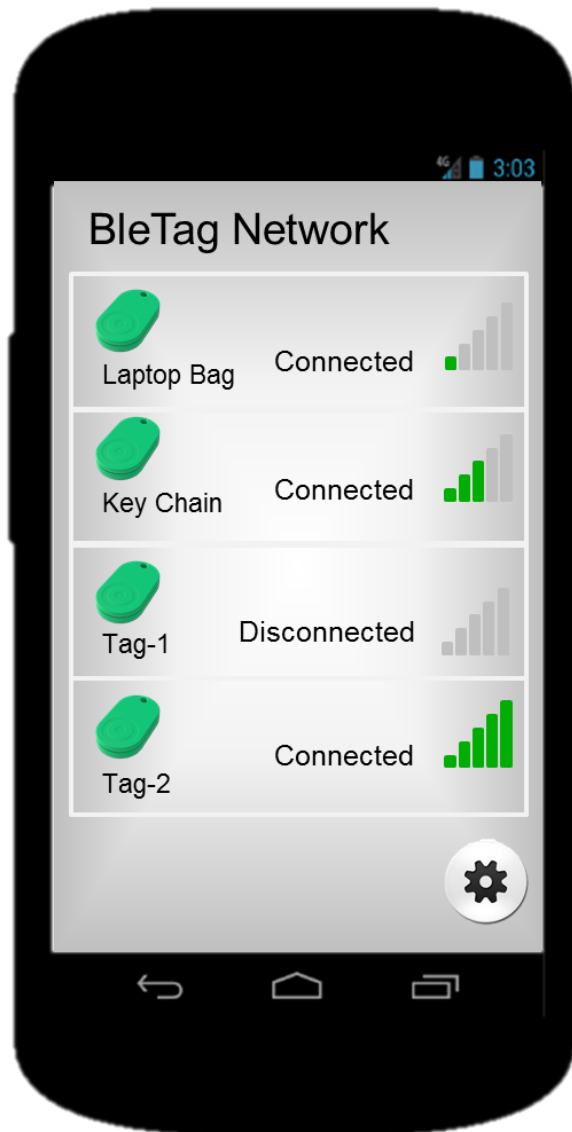


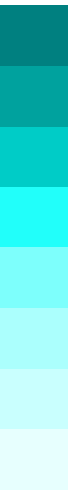
# Concept-3

- Dimension: 30 x 24 x 8.5mm
- No Buzzer (Available space o be studied)



# User Interface





**Thank You**